



A4300 VA3 PRO

3-CHANNEL VIBRATION ANALYZER

MASTER THE LANGUAGE OF YOUR MACHINERY



A4300 VA3 Pro

3-CHANNEL ANALYZER





The A4300 VA3 Pro is the newest addition to our range of portable devices for vibration diagnostics.

There are 2 signal inputs and 1 tacho/trigger input. Input 2 offers connectivity to a triaxial sensor, therefore all 3 channels can be measured simultaneously. The expert system developed by Adash can automatically detect machine faults such as unbalance, looseness, misalignment and bearing faults.

There is a non-contact IR temperature sensor (for immediate bearing temperature measurement) and a LED stroboscope/torch. The A4300 VA3 Pro is designed for one-handed operation. With a weight of just 780g and a battery life of more than 10 hours of operation, the unit is suitable for long route measurements.

The A4300 VA3 Pro instrument can be configured according to your requirements by choosing optional modules e.g. analyzer, route, balancer. Optional modules can be purchased also additionally and downloaded to the instrument without the need of sending it back to the factory.

-  > Low weight 780 g
- > Long lasting battery
- > Ideal for route measurement
- > Route compatibility with VA4 Pro

-  Includes stroboscope and torch



Analyzer



Route



Balancer



Meter

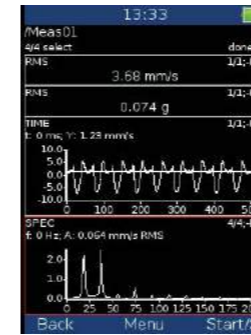


Expert system

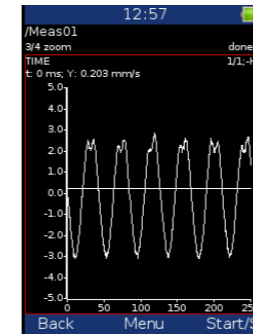


Stroboscope

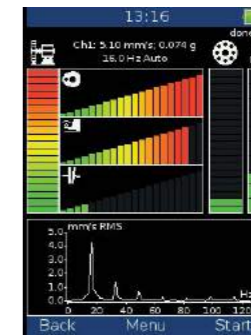
MEASUREMENTS



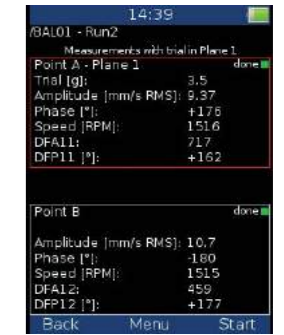
Analyzer



Time signal



Expert system

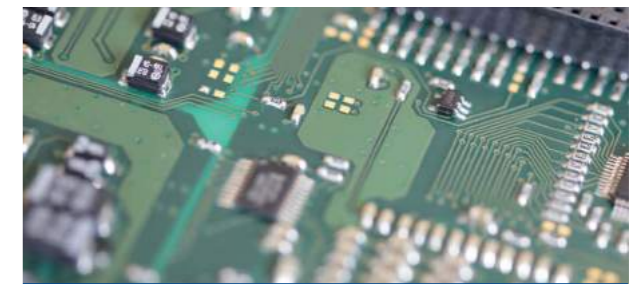


Balancer



DATA PROCESSING

- > Real time FFT
- > DEMOD - ENVELOPE analysis
- > ACMT - low speed bearing analysis
- > Order analysis
- > User band pass analysis
- > RPM measurement
- > DC measurement
- > Orbit measurement



A/D CONVERSION

- > 24 Bit A/D conversion
- > 64 Bit signal processing
- > 120 dB dynamic range
- > No Auto-Gain



IDEAL FOR ROUTE MEASUREMENT

- > Heavy-Duty aluminium case
- > Removable Li-Ion battery pack
- > More than 10 hours of operation
- > Colour display 240 x 320 px
- > FFT resolution: 25600 lines
- > Route memory: 8GB



TOP PANEL

- > ACC ICP® - sensor input
- > 2 signal inputs AC/DC (IN1,IN2)
- > Input IN2 is ready for triaxial sensor (3 simultaneous channels)
- > Input for tacho/trigger
- > IR non-contact temperature sensor
- > LED stroboscope/torch



TECHNICAL SPECIFICATIONS:

Input channels:	3 AC, ICP® power supply on/off 3 DC for process values 1 TACHO for external trigger
Input range:	AC +/- 12 V peak-peak DC +/- 24V
AD conversion:	24 bit, 64 bit internal signal processing No AutoGain function!
Dynamic range S/N:	120 dB
Frequency ranges:	Maximum range: 1 Hz - 90 kHz (1 Ch, 194 kHz sampling) Maximum range: 1 Hz - 25 kHz (3 Ch, 64 kHz sampling) Minimum range: 1 Hz - 25 Hz (3 Ch, 64 Hz sampling)
Sampling mode:	Fully simultaneous for 3 channels
FFT resolution:	Min. 25 lines Max. 25 600 lines
Unit modes:	Analyzer - analytic measurement Data collector - route measurement Balancer LED stroboscope, LED torch FASIT - Expert system for fault detection Vibration meter
Data processing:	Real time FFT DEMODO - ENVELOPE analysis ACMT - low speed bearing analysis Order analysis User band pass analysis RPM measurement DC measurement Orbit measurement
Trigger:	Manual, External, Signal level, Time Use for signal recording trigger Speed change, Time interval
Display:	Colour 240 x 320 pixels, TFT
Communication:	USB
Temperature range:	-10°C to +50°C
Power:	Battery 10 hours of operation, AC 230 V
Case:	Aluminium heavy duty

© Adash 2016

MASTER THE LANGUAGE OF YOUR MACHINERY

